

J70 SPANISH OPEN

Ribeira Sacra Trophy

June 1-3, 2018

SAILING INSTRUCTIONS (SI)

The J70 Spanish Open – Ribeira Sacra Trophy, is organized on Ría de Vigo by the Real Club Náutico de Vigo (RCNV) in conjunction with the Spanish J70 Owners Association, in June from 1-3, 2018

1. RULES.

- 1.1 The regatta will be governed by the rules as defined in The Racing Rules of Sailing (RRS 2.017-2020)
- 1.2 The rules of the International J/70 Class [DP].
- 1.3 The measurement instructions (IM) that are part of the sailing instructions [DP]
- 1.4 a) The notation '[NP]' in a rule in this SI It means it won't be a motive for protests between ships. This modifies the rule 60.1 (a) RRs.

(b) The notation '[DP]' in a rule in this SI means that the penalty for a breach of that rule may, at the discretion of the protest committee, be less than disqualification.

(c) The notation [SP] in a rule in this SI It means that the penalties will be fixed, without hearing and imposed by the Race Committee, in the most recently completed race, applied as indicated in rule 44.3 RRs. (modifies rules 63.1 and A5 of the RRS).

2. NOTICES TO COMPETITORS.

- 2.1 Notices to competitors will be posted on the official notice board located at the hall of the Sports building of the RCN Vigo

3. CHANGES TO SAILING INSTRUCTIONS.

- 3.1 Any change to the sailing instructions will be posted on the official notice board two hours before the warning signal race on the day it will take effect, except that any change to the schedule of races will be posted by 21:00 on the day before it will take effect

4. SIGNALS MADE ASHORE.

- 4.1 Signals made ashore will be displayed on the official signal mast located on first floor of the Sports building of the RCN Vigo.
- 4.2 When flag "AP" is removed ashore, "1 minute" is replaced with "not less than 30 minutes".
- 4.3 Flag D with one sound means 'The warning signal will be made not less than 30 minutes after flag D is displayed. Boats are requested not to leave the harbour until this signal is made. [DP]

5. SCHEDULE OF RACES.

5.1 The program will be

Date	Hour	Action
Friday, June 1st	From 12:00 to 20:00 hours	Opening sailing office Registration (deadline) Sailing Instructions delivery
	15:00 hours	Free Training
Saturday June 2nd	From 11.00 to 12.00 hours...	Opening Race office Registration (deadline) Sailing Instructions delivery
	11.45 hours	Skippers briefing (Sail Office-Sport building first floor)
	13.30 hours	Warning signal 1st race
Sunday June 3rd	No later than 19.00 hours ...	Last start of the day (Limit)
	10.00 hours	Warning signal 1st race
	No later than 14:00 hours ..	Last start of the day (Limit)

5.2 On the last scheduled day of racing no warning signal will be made after 14:00 hours.

5.3 To alert boats that a race or sequence of races will begin soon, the orange starting line flag will be displayed with one sound at least five minutes before a warning signal is made.

5.4 **Event format:** All boats will sail as one fleet

6. CLASS FLAG.

6.1 Class flag will be White with J70 logo

7. RACING AREAS.

7.1 Attachment A1 shows the location of the racing areas.

8. THE COURSES.

8.1 The course will be a windward-leeward (Attachment A2).

8.2 The leeward Gate can be replaced by a single mark. In this case will be rounded to port.

8.3 No later than the warning signal, the race committee signal vessel will display the approximate compass bearing of the Mark 1.

8.4 Race Committee will try to mount a course that is completed between 50 and 60 minutes. Failure to meet the target time will not be grounds for redress. This changes RRS 62.1

8.5 The courses may be shortened as long as at least 3 legs have been completed (not including the offset (from mark 1 to mark 2)).

9. MARKS.

9.1 Marks 1 and 2, will be YELLOW Conical inflatables.

Marks 3P and 3S will be RED cylindrical inflatable.

9.2 Change Course Mark will be RED conical inflatable.

9.3 **Marks delimiting the starting line:** Race committee boat with Orange flag at the starboard end of the starting line, and an orange-flagged Visor boat at the port end.

9.4 **Marks delimiting the finishing line:** Blue Flag Race Committee boat at the starboard end of the finish line and small mark red cylindrical port end.

10. THE START.

10.1 The starting line will be between staffs displaying orange flags on the starting marks boats.

10.2 A boat that does not start within four minutes after her starting signal will be scored Did Not Start without a hearing. This changes RRS A4 and A5.

10.3 In case of unfavourable conditions, the race committee boat may maintain his position with engine.

11. CHANGE OF THE NEXT LEG OF THE COURSE.

11.1 To change the next leg of the course, the race committee will lay a new mark RED conical inflatable (or move the finishing line) and remove the original mark as soon as practicable. When in a subsequent change a new mark is replaced, it will be replaced by an original mark.

The change will be noted before the boat has started the stage, although the new mark is not yet in its position. In order to maintain the configuration of the course, any mark that surrounds the new mark will be repositioned.

11.2 A change of course in the position of Mark 1, will lead to Mark 2.

11.3 A change in the position of the 3 - 3G mark (gate) before any boat has been surrounded by Mark 2 for the first time will not need to be notified. The same as with the distance variation to adjust the test time, it will use the original Marks.

12. THE FINISH.

12.1 The finishing line will be determined between the mast on board the Blue Flag Race Committee boat at the starboard end of the finishing line and the small red cylindrical inflatable mark at the port end.

13. PENALTY SYSTEM.

13.1 Turn Penalties , RRS 44.1 and 44.2, will apply.

14. TIME LIMITS.

- 14.1 Time limit for course is **90** minutes. Time limit for Mark 1 is **25** minutes. If no boat has passed Mark 1 within the Mark 1 time limit or complete the course on time, the race will be abandoned.
- 14.2 Boats failing to finish within **15** minutes after the first boat sails the course and finishes will be scored Did Not Finish without a hearing. This changes RRS 35, A4 and A5.

15. PROTEST AND REQUESTS FOR REDRESS.

- 15.1 A boat that finishing and intends to protest for any rule other than Part 2 of the RRS, must report to the boat of the race Committee on the finishing line showing a Red Flag and also inform of the reason of the protest.
- 15.2 A boat retired or not finished and which intends to protest by any rule other than Part 2 of the RRS, must report at the Race Office (First floor Sports building RCN Vigo) immediately after their arrival on land indicating the sail number of the boat against which they intend to protest
- Protest forms are available at the race office.
Protests and requests for redress or reopening shall be delivered there within the appropriate time limit.
- 15.3 The protest time limit is 60 minutes after the last boat has finished the last race of the day or the race committee signals no more racing today, whichever is later. The resulting time limit shall be indicated immediately at the Notice Board.
- 15.4 Notices will be posted no later than 30 minutes after the protest time limit to inform competitors of hearings in which they are parties or named as witnesses. Hearings will be held in the protest room, located near the race office.
- 15.5 Notices of protests by the race committee, technical committee or protest committee will be posted to inform boats under RRS 61.1(b).
- 15.6 On the last scheduled day of racing will not be accepted protests of measurement of weighing boats. This changes RRS 62.2. [NP]

16. SCORING.

- 16.1 The low-point scoring system RRS, will apply, and
- 16.2 There are 8 races scheduled and Two races must be completed for the validity of the regatta.
- 16.3 a) When fewer than 6 races have been completed, a boat's series score will be the total of her race scores.
b) When from 6 to 8 races have been completed, a boat's series score will be the total of her race scores excluding her worst score.
- 16.4 A boat that alleged a supposed error in the results will have to fill out a results review form available at the race office.

17. SAFETY REGULATIONS. [NP] [DP]

- 17.1 A boat that retires from a race shall notify the race committee as soon as possible, VHF Channel 71 [DP]

18. REPLACEMENT OF CREW OR EQUIPMENT. [DP]

- 18.1 Substitution of competitors will not be allowed without prior written approval of the race committee.

- 18.2 The number of crew members cannot be changed during the race. In the event that any boat is detected by the judges, umpires or officers in violation of this rule, it shall be automatically penalized with a point in each of the races in which has been observed.
- 18.3 Substitution of damaged or lost equipment will not be allowed unless authorized by the [race committee] [protest committee]. Requests for substitution shall be made to the committee at the first reasonable opportunity.

19. EQUIPMENT AND MEASUREMENT CHECKS.

- 19.1 Equipment may be inspected or measured at any time during the event.
On the water, a boat can be instructed by a member of the race committee or the technical committee to proceed immediately to a designated area for inspection.

20. TRASH DISPOSAL. [DP]

- 20.1 Do not shed trash to Water.

21. RADIO COMMUNICATION. [DP]

- 21.1 Radio Communication Channel of Committee, **71 VHF**
- 21.2 The race committee will attempt to broadcast Individuals and General Recall on VHF channel 71. Failure to make a broadcast or to time it accurately will not be grounds for a request for redress. This changes RRS 62.1(a).

22. OFFICIAL BOATS.

Official boats will be marked as follows:
Race Committee: White Flag with “**CR**” black
Protest Committee: White Flag with “**J**” black
Comité Técnico : White Flag with “**M**” black

23. HAUL-OUT RESTRICTIONS. [NP][DP]

- 23.1 Any ship will have to be afloat before 20.00 hours of the day previous to the beginning of the competition and, while it continues in competition, shall not be hauled out during the regatta except with and according to the terms of prior written permission of the race committee.

24. ADVERTISING. [NP][DP]

- 24.1 World Sailing Regulation 20.9.2 applies

25. PRIZES.

- 25.1 The prize list will be shown on the official notice board before the start of the first race

26. **DISCLAIMER OF LIABILITY.**

26.1 Competitors participate in the regatta entirely at their own risk. See RRS 4, Decision to Race. The organizing authority will not accept any liability for material damage or personal injury or death sustained in conjunction with or prior to, during, or after the regatta.

27. **TRACKING SYSTEM. [NP] [DP]**

27.1 During the races, each boat must have mandatory activation of the monitoring and safety program that the class in VIGO has established. Not being connected without a justified cause will result in the penalties agreed upon at the skippers meeting

May 2018, RCN Vigo

TIDES (With the spanish hour):

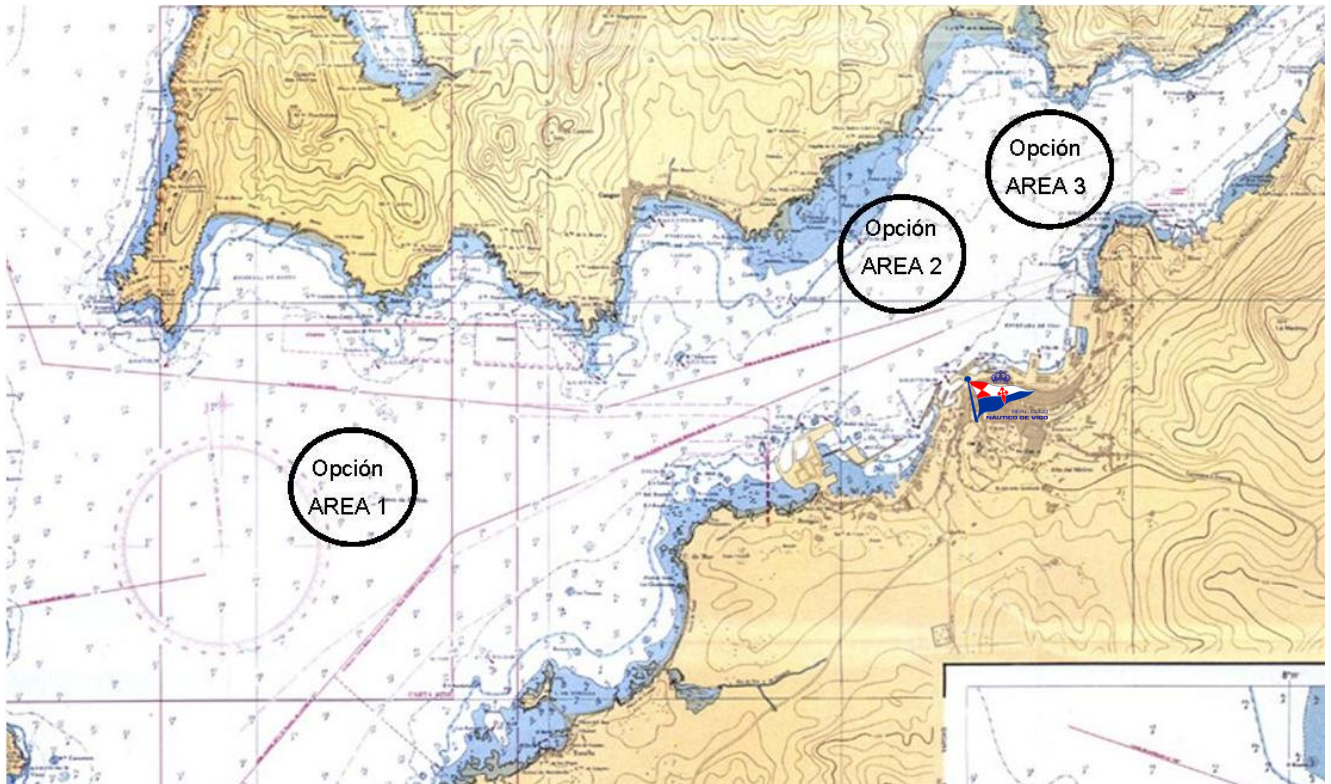
Ría de Vigo – Saturday june 2		
	Hour	Height meters
Low Tide	00:50	0.9
High Tide	06:59	3.2
Low Tide	12:58	1.1
High Tide	19:15	3.3

Ría de Vigo- Sunday june 3		
	Hour	Height meters
Low Tide	01:28	1.0
High Tide	07:38	3.0
Low Tide	13:36	1.2
High Tide	19:55	3.2

SUNSET AT VIGO (With the spanish hour):

Saturday, June 2 : 22:04 hous

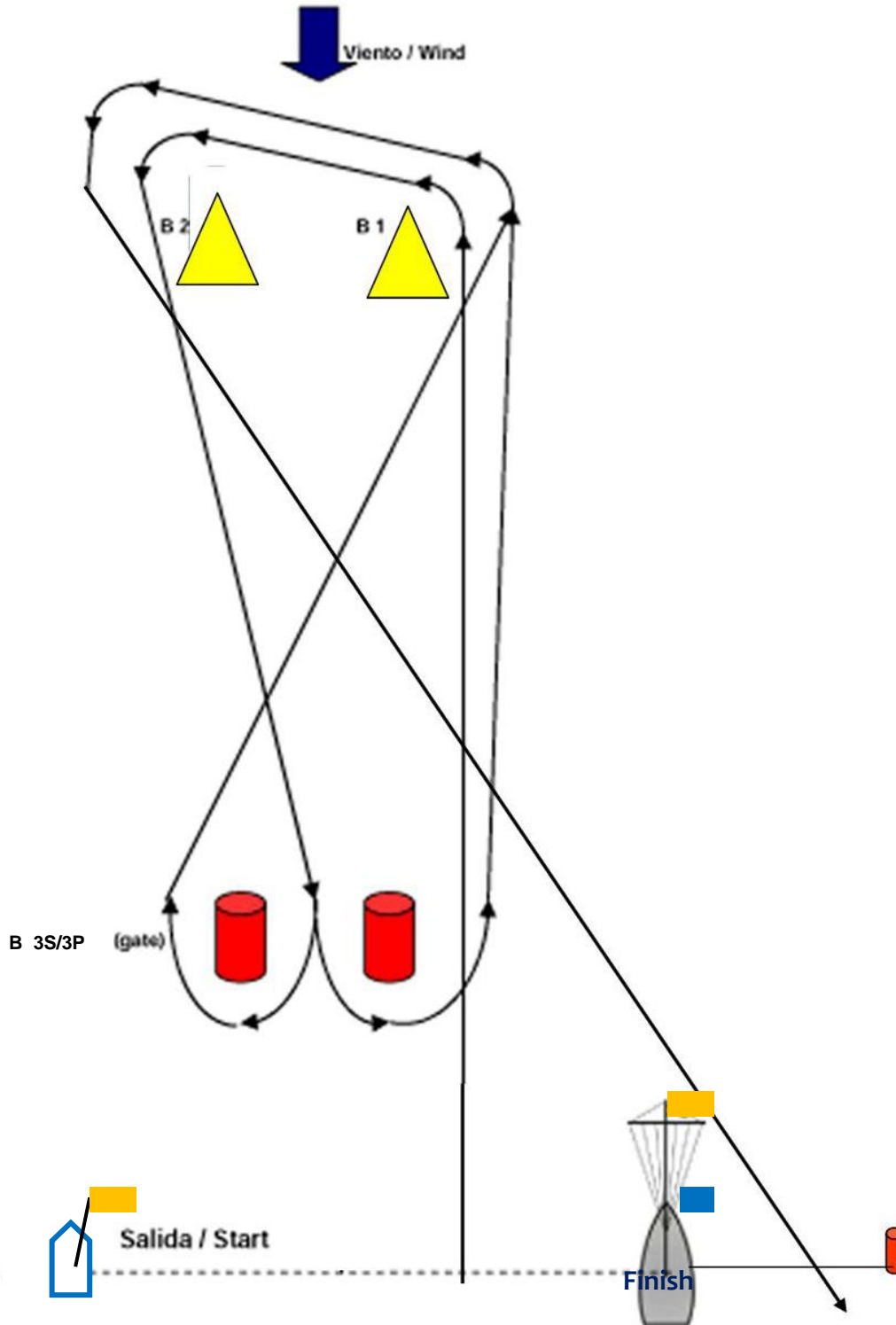
Attachment A1 RACING AREAS



A1.1 - The center of The principal Race Area (AREA 1) will be located West of the Real Club Náutico de Vigo at 3.0 miles away.

A1.2 - The Race Committee shall report on Radio VHF 71 of the Race Area for sailing

Attachment A2 The COURSE



The Course:

Start - Mark 1 – Mark 2 - Mark 3P/3S (gate) - Mark 1 – Mark 2 - Finish

ZONE MAP - REAL CLUB NAUTICO VIGO

